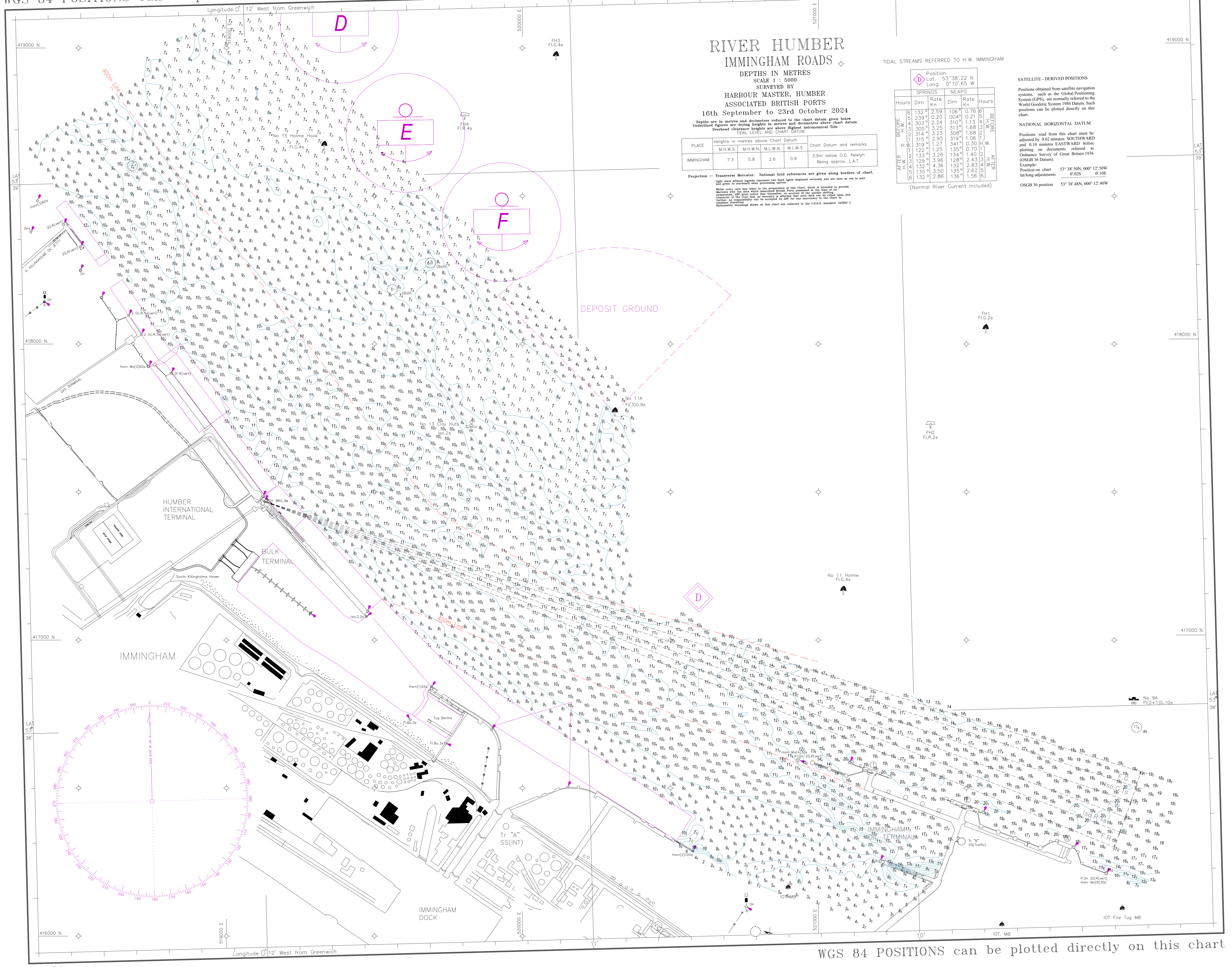


WGS 84 POSITIONS can be plotted directly on this chart



RIVER HUMBER IMMINGHAM ROADS

DEPTHS IN METRES
SCALE 1 : 5000
SURVEYED BY
HARBOUR MASTER, HUMBER
ASSOCIATED BRITISH PORTS
16th September to 23rd October 2024

Depths are in metres and decimetres reduced to the chart datum given below
Underlined figures are drying heights in metres and decimetres above chart datum
Overhead clearance heights are above Highest Astronomical Tide
TIDAL LEVEL AND CHART DATUM

PLACE	Heights in metres above Chart Datum				Chart Datum and remarks
	M.H.W.S.	M.H.W.N.	M.L.W.N.	M.L.W.S.	
IMMINGHAM	7.3	5.8	2.6	0.9	3.9m below O.D. Newlyn Being approx. L.A.T.

TIDAL STREAMS REFERRED TO H.W. IMMINGHAM

Position Lat. 53°38'22 N Long. 0°10'65 W	SPRINGS		NEAPS		Hours
	Dirn	Rate Kn	Dirn	Rate Kn	
BEFORE H.W.	132°	2.59	106°	0.76	6
	239°	0.20	004°	0.21	6
	303°	2.24	310°	1.13	4
	305°	3.25	313°	1.66	2
	314°	3.23	308°	1.68	1
	315°	2.95	319°	1.06	1
AFTER H.W.	122°	1.27	341°	0.30	1
	319°	1.25	135°	0.70	1
	122°	1.25	135°	0.70	1
	213°	3.26	134°	1.40	1
	129°	3.96	128°	2.43	1
	132°	4.36	132°	2.83	1
H.W.	132°	3.50	135°	2.62	6
	132°	2.86	136°	1.56	6

(Normal River Current Included)

SATELLITE - DERIVED POSITIONS
Positions obtained from satellite navigation systems, such as the Global Positioning System (GPS), are normally referred to the World Geodetic System 1984 Datum. Such positions can be plotted directly on this chart.

NATIONAL HORIZONTAL DATUM
Positions read from this chart must be adjusted by 0.02 minutes SOUTHWARD and 0.10 minutes EASTWARD before plotting on documents referred to Ordnance Survey of Great Britain 1936 (OSGB 36 Datum).
Example: Position on chart 53°38'50N, 00°12'50W
lat/long adjustments 0°02S 0°10E

OSGB 36 position 53°38'48N, 00°12'40W

WGS 84 POSITIONS can be plotted directly on this chart